



Instructions

Manual Injection Valve Holder Part Number 21044039

This accessory is for use with the VERITY® 3240 High Pressure Binary Gradient Pump or any other VERITY instrument with similar accessories rails on the sides. It can be ordered with the pump or added afterwards in the field.

The holder supports a Rheodyne® manual injection valve if manual injection is required. The injection valve must be ordered separately using one of the following part numbers:

PART NUMBER	DESCRIPTION
4967725I	VALVE, RHEODYNE 7725I
4963725I	RHEODYNE MANUAL INJECT VALVE (3725I-038)

A locking device is provided to attach the holder to the integrated accessories rail of the pump. The manual injection valve can be installed horizontally to either side of the VERITY 3240 Pump.



Figure 1
Manual Injection Valve with Loop on VERITY® 3240 High Pressure Binary Gradient Pump

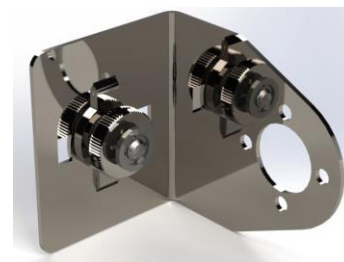


Figure 2
Manual Injection Valve Holder

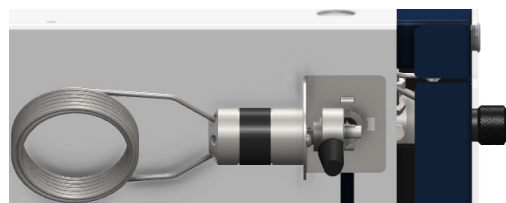


Figure 3
Horizontally to the Left Side



Figure 4
Horizontally to the Right Side



Figure 5
Vertically to the Right Side



Figure 6
Vertically to the Left Side

Installation

1. Choose the side of the pump to install the manual injection valve and the orientation of the valve and its sample loop (horizontal or vertical).
2. Ensure the knurled nut of the locking device is loosened (spring released) and the T-head bolt is positioned vertically (aligned with the bracket tabs).
3. Fit the locking device into the manual injection valve holder according to the position chosen and then into the rail to the side of the pump.
4. Adjust the position in height.
5. Press slightly on the knurled nut to compress the spring of the locking device and tighten the nut to turn the T-head bolt 1/4 turn until it is in a horizontal position. The bolt end notch allows for checking the correct positioning.
6. Firmly finger-tighten the knurled nut of the locking device to secure the manual injection valve holder to the pump.
7. Install the manual injection valve in place by securing the valve body to the holder using two screws provided with the valve. Only two holes of four are used on the holder. Fit the valve handle as described in the documentation supplied by the valve manufacturer.

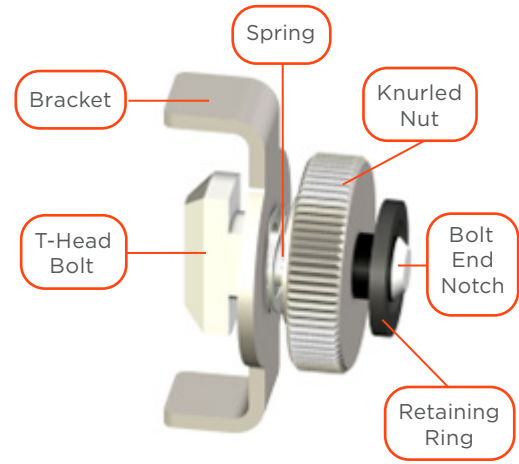


Figure 7
Locking Device

Trademarks

All product and company names are trademarks™ or registered® trademarks of their respective holders. Use of the trademark(s) in this document does not imply any affiliation with or endorsements by the trademark holder(s).